



-

**(2005-1953)**

2007



.

.

1	.	:	1.1
3			2.1
4			3.1
4			4.1
5			5.1
		:	
6			1.2
24			2.2
		:	
30			1.3
31			2.3
	:	:	
37			1.4

41	2.4
48	3.4
51	4.4
54	5.4
58	6.4
61	7.4
62	8.4
65	9.4
68	10.4
72	11.4
77	12.4
81	13.4
	:
84	1.5
93	2.5
98	3.5
100	4.5
<b>102</b>	

43	1
44	2
	3
46	
	4
47	
	5
47	
48	6
49	7
49	8
50	9
55	10
57	11
57	12
59	13
60	14
60	15
62	16
63	17
64	18
64	19

65		20
66		21
67		22
67		23
69		24
24		25
75		26
78		27
80		28
95		29
96		30
98	[2005-1953]	31

42

45

50

52

70

73

74

76

85

1953

86

1976

88

1992

89

2005

91

92

94

97



39		-1
39		-2
40	2007	-3
40		-4
40		-5
81		-6
81		-7
83		-8
83		-9
83		-10

2005 - 1953 ]

-

[

2007 -

1:25000

1953

1:30000

1992 1976

2005

2005

104.6

1953

566.7

671.3

## **Abstract**

### **Urban expansion in the city of Tafila-Jordan ,during the period (1953 - 2005)**

**Adnan Ibrahim Al-Mesaa'deen  
Mu'tah University - 2007**

This study aims to track and delimit the size of the built environment expansion as well as various factors that have influenced the urban development in the city of Tafila. Light is cast here on improvements in the various areas of infrastructure such as health services, transport, educational facilities, water, electricity and sewage systems, and their efficiency.

This project adopts a historical approach to examine urban expansion using aerial photographs taken of the city in 1953, 1976, and 1992 and satellite images taken in 2005. We have also used GIS and remote sensing software to create and analyze maps of the city. The residential areas within the city of Tafila in 1953 were 104591 m<sup>2</sup> and grew to 671289 m<sup>2</sup> in 2005 with a 566698 m<sup>2</sup> increment. Information extracted from these maps have shown that building up activities indicates multiple nuclei growth in the modern quarters that is on paradox with the accumulative growth characterized the old City itself.

The present study supports and presents thoughts related to future developmental programs and to suggest solutions for some difficulties facing urban expansion and comprehensive planning. Obstacles that hamper execution of development projects have been outlined. Among these is the absolute absence of planning that causes difficulties such as traffic jams and the rarity of public parks. The study recommends that attention should be paid to the infrastructure, particularly road networks and reorganization of the traffic system in the city to cope with the topography. Areas that are likely to witness instant growth in building activities must be demarked. Organizational plans required for integrable, comprehensive infrastructure should also be prepared in co-ordination with all governmental institutions.

: **1.1**

.(1995 ) .

.( 2003 ) .

: Hiuston

.( 2003 ) .

.  
 :  
 . ( )  
 .  
 ( ) " polis " ( )  
 .( ) ( tofealpolis )  
 .(1985 ) .  
 . ( )  
 .( 2007 )  
 .  
 .( )  
 .( - - )  
 .(1985 )  
 .

( )

(1985 ).

**2.1**

	:	<b>3.1</b>
-(		
.( 2005–1953)		-1
		-2
		-3
		-4
		-5
		-6
		<b>4.1</b>
	:	
		:
		:

:

:

:

:

:

: **5.1**

:

-1

.( 2005 - 1953)

-2

-3

( )

-4

-5

-6



: 1.2

% 75

.(1996 )

:  
"

."

.(1995 )

( ) . 420

( )

.( 1995 )

ROBERT.J.BRAIDWOOD

7000

( )

( )

150

. 6500

-

-

)

. 3500 - 4000

.(HARAPPA ) ( MOHENJO-DARO -

( )

ANYANG ( )  
( COPAN )

- -

MAYA

)

(

( )

.( 2001 ) .

:

( Descriptive )

(Analytic)

( Interpretative)

:

:

-1

- :

- .

: -2

## Human Spatial Behavior

: -3

: -4

-5

GIS

.(2003 ) Remote Sensing

.( 1995 ) .

( ) Meitzen ( )  
Demangon

:  
( landscape ) -1

-2  
Functional Approach -3

( Morphological Approach ) -4

.(2002 ) .

:

:  
: -1

250

.3 /

:Site -2

RATZEL

.(2001 ) .

:Situation -3

.(2001 ) .

:

:

:

**-1**

.( 1990 ).

: -2

: -3

: -4

: -5



. : -6

. : -7

. 1979

112000

5000

.( 1990 )

:

:

:

:

.

:

:

-

.

.

:

-

.

:

-

.

( Taxi )

.( 1990 )

:

:

:

:

:

.(2004 ).

:(Radial plan )

1

:( Linear Plan )

2

:( Gridiron Plan )

3

:(The plan without plan )

4

.(2002 )

:

.(2002 )

E.W.Burgess

:

:

:

-1

-2

-3

-4

-5

:

:

Hoyt

Harris and

:

:

Ullman

).

.(2002

:

-:

:

-1

-:

:

.

:

.

:

.

:

.

:

.





.( 2000 ).

Northam

:

-1

-2

-3

-4

-5

:

-

-

). .

(2007

(2007 )  
(9.967.402)

**2.2**

(2004)

( )

(2000 1983 1953)

(2007)

(2005)

(2005)

(1946 -1892)

.( 2004 )

2000 -1980

(2004)

(2004)

. 1972

(2003)

- 1970

(1998)

1995

GIS

(1998)

(1998)

(1996)

1516

(1996)

.( ) :

(1993)

. - -

.

.

.

.



: 1.3

2005 1953

:

-1

-2

:

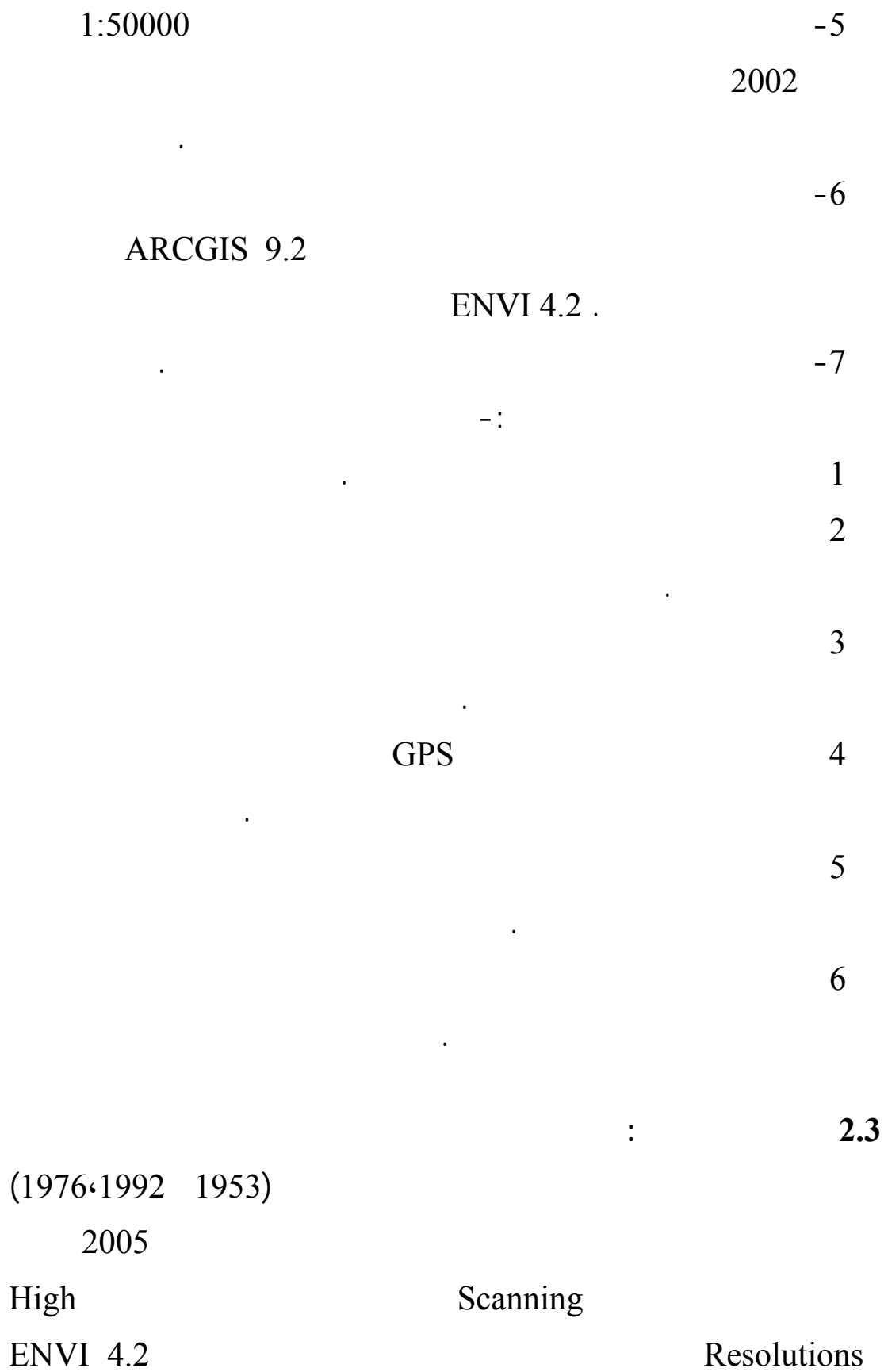
1953 1:25000 -1

1976 1:30000 -2

1992 1:30000 -3

2005 -4

Google Earth Pro



```

.
-:
Open -
File -Image File
Map-Registration- -
.Image to Map Registration
( ) -1
( ) 2005

GPS )
.(

RMS: Root Mean Square
. 1 (Error)
-2

Universal Transfer Mercator
.Datum = European 1952 Zone = 36

.
-3
(RMS Error )

```

Warp

5

Warp

-4

( Image Format )

GeoTiff (Format)

(ARCGIS 9.2)

:

1976

1976

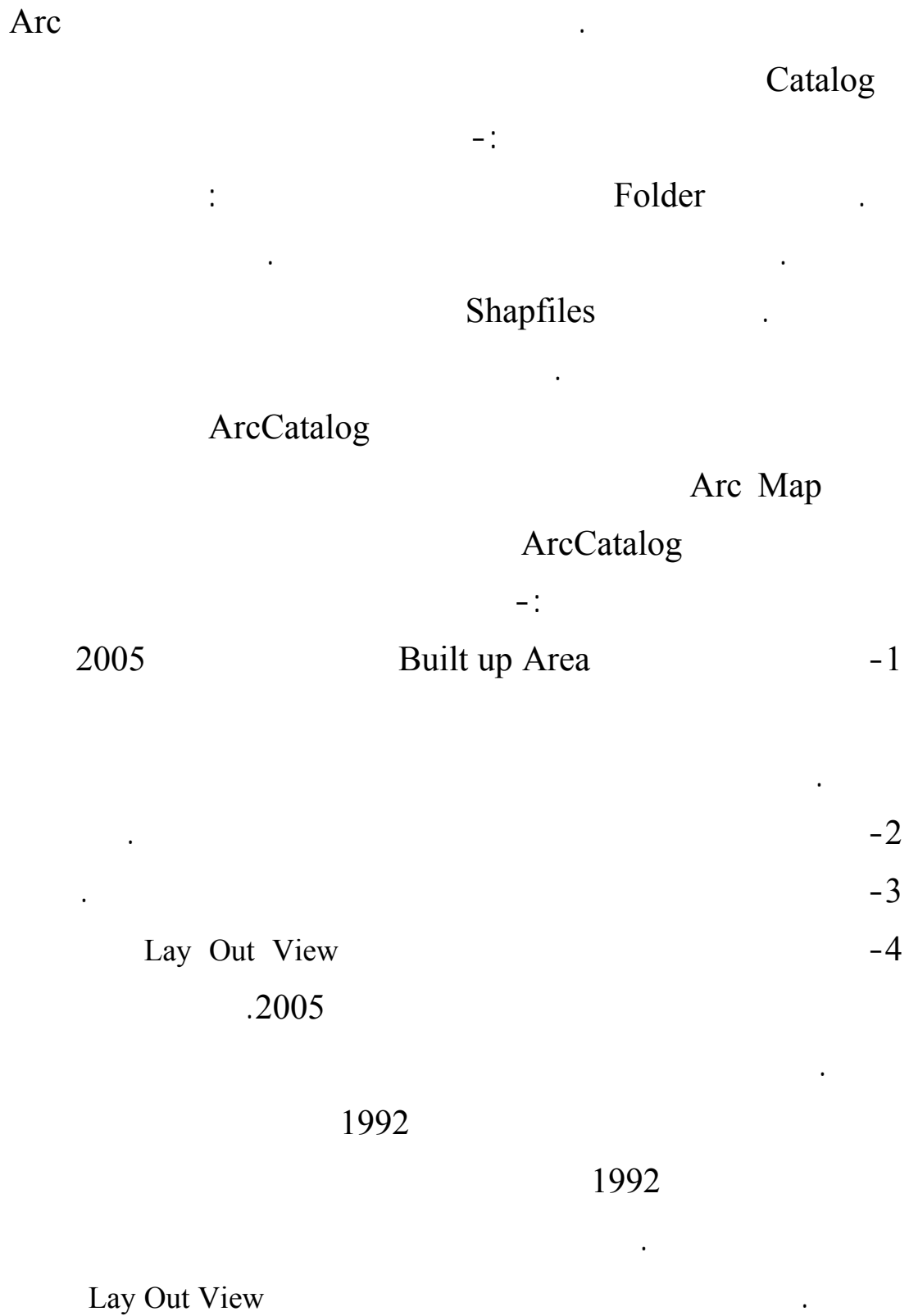
-1

-2

Image to Image Registration

( UTM Coordinates )

			-3
			-4
	Mosaic		
			-5
		GeoTiff (Format)	
		ArcGIS 9.2	
			-:
<u>2005</u>	Built up Area		-1
<u>1992</u>	Built up Area		-2
<u>1976</u>	Built up Area		-3
<u>1953</u>	Built up Area		-4



)  
 ( :  
 ) -1  
 ) -2  
 ( -3  
 -4  
 -5

" : 1.4  
" (J.M Houston)  
" (G.Taylor)

:  
:( Nuclear Stage ) -1

" "



1516

( The Formative Stage )

.(1985 )

-2

1923

1936

(1) .(1986 )

(2)



(1)



(2)

( The Modern Stage )

-2

(5) (4) (3)



.2007

(3)



(4)



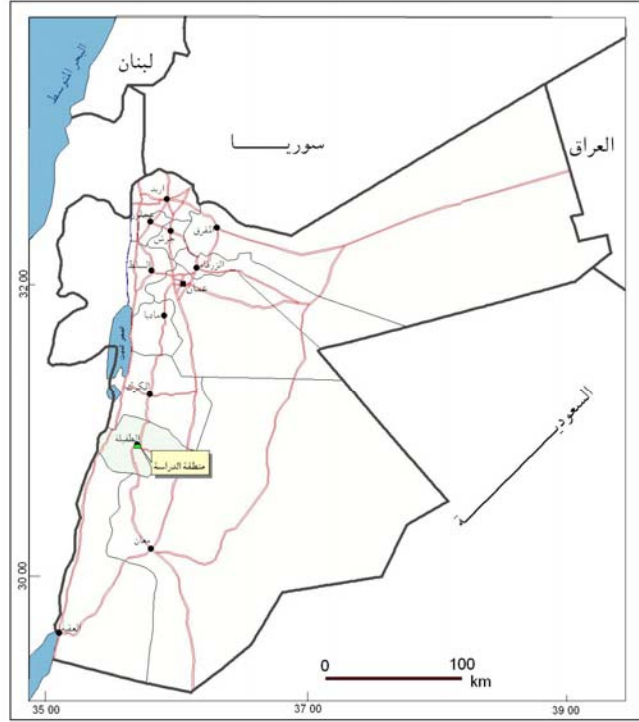
( )

(5)

: 2.4

31 0 07 ] [ 35 18 03 – 36 05 55 ]  
2209,08 ( 1 ) [ 30 36 16 –  
2  
2 227,01 2 1030,28  
.2 951,79  
44,71 74,42

(1)



شكل ( ١ )  
موقع منطقة الدراسة في الاردن.

(1)

---

/		
267		
252		
255		
229		
183		
151		
208		
205		
63		
90		
189		
	. 2001	-:
1999	74480	

---

2005      77100

.( 2 )

12

(2)

2006

---

1939405	941986	997419	382674	498085	182961
925736	4421642	474094	166084	205507	130516
774569	373772	400797	143421	177855	85689
344985	166380	178605	62109	78286	53517
240515	115844	124671	39310	47899	42682
204135	100779	103356	35706	45418	35027
153650	74596	79054	25801	33665	24047
129792	62929	66863	22791	27935	18930
118496	58080	60416	20919	27466	18224
101736	45260	56476	18230	45251	14724
92672	44099	48573	15464	20482	17122
78400	38538	39862	13297	16549	12649
5100681	2472264	2628717	945806	1204398	636088

---

.2006

:

2005

23420

% 30

-:

( 2)

7

28

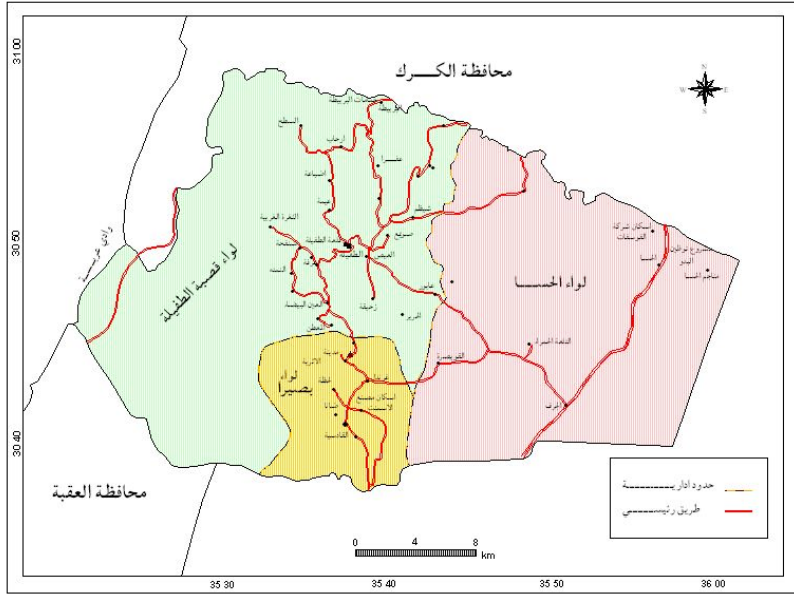
-:

46815

.

(3)

.



شكل رقم ( )  
 خارطة التقسيمات الادارية في محافظة الطفيلة.



( 3 )

2005

---

---

8340	4092	4248	1411	1707	1282
4199	2085	2114	730	1083	724
2273	1103	1170	363	469	321
592	302	290	100	130	123
64	29	35	10	20	28
790	364	426	142	189	173
506	240	266	94	123	107
554	260	294	88	125	87
74	38	36	21	27	28
393	194	199	68	115	106
376	191	185	68	97	97
6	3	3	2	18	21
16	8	8	5	18	19
196	84	112	33	64	58
6	2	4	3	10	11
5	1	4	2	7	8
2	0	2	2	14	15
58	30	28	11	33	32
5	0	5	2	9	11
43	19	24	5	9	9
1333	634	699	230	235	240
68	36	32	13	41	42
1077	528	549	173	121	171
672	325	347	105	143	116
9	2	7	2	13	17
0	0	0	0	5	5
1738	873	865	301	286	289
23420	11399	12021	4511	5280	3367

---

.2005

:

3

9

-:

19353

( 4 ) 2005

( 4 )

---

6879	3360	3519	1227	1421	1208
6933	3392	3541	1187	1519	1156
4004	1996	2008	673	844	730
904	433	471	149	169	146
500	228	272	74	120	110
82	39	43	15	31	37
30	13	17	1	9	9
0	0	0	0	6	6
21	13	8	6	6	6

.2005

:

3

-:

(5)

2005

9122

( 5 )

---

7888	4004	3885	1295	1608	1497
1224	578	646	173	221	222
10	0	10	2	13	15

.2005

:

3.4

2006

, %1.51 78400  
40

%25.1

%74.9

5.8 ,2 / 34.9

(6)

(6)

**2006**

%	( )
62.2	48840
25.7	20190
12.1	9410
100	78400

. 2006

-:

%50.9

(7)

%49.1

(7)

---

---

23910	24930
9950	10240
4680	4730

---

. 2006 -:

( 44 - 15 )

%45

.(8)

(8)

**2006**

---

%		
13.7	11130	4 -0
29.7	23141	14 - 5
45.0	34658	44 - 15
11.6	9471	45
<b>100</b>	<b>78400</b>	

---

. 2006 -:

( 9 )

.(2005-1994 )

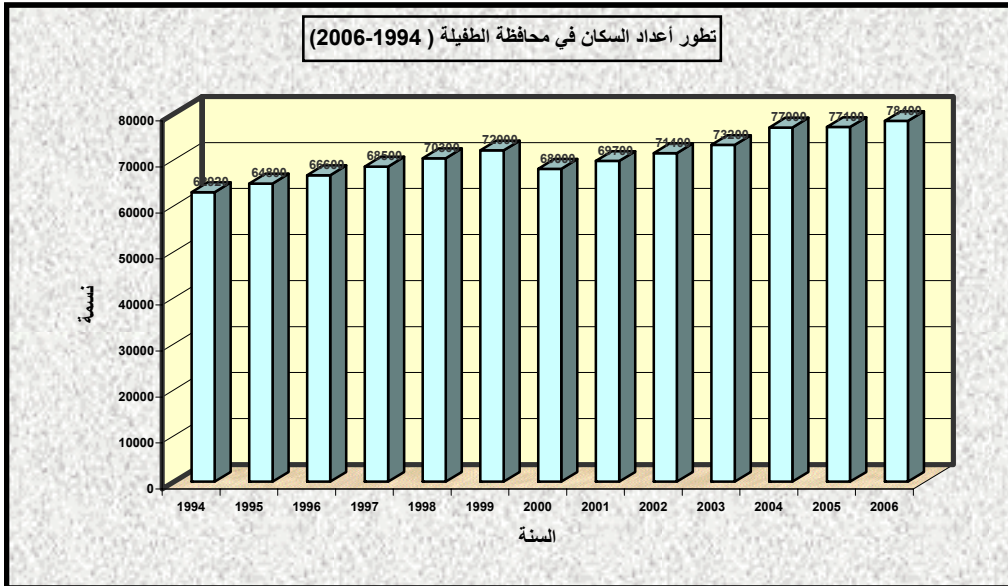
جدول رقم ( 9 )  
تطور أعداد السكان في محافظة الطفيلة خلال الفترة ( 1994-2005 )

النسبة من المملكة	المجموع	اناث	ذكور	السنة
1.52	62920	30235	32685	1994
1.52	64800	31100	33700	1995
1.52	66600	32000	34600	1996
1.52	68500	32900	35600	1997
1.52	70300	33800	36500	1998
1.52	72000	34600	37400	1999
1.4	68000	32400	35600	2000
1.4	69700	33200	36500	2001
1.4	71400	34000	37400	2002
1.4	73200	34800	38400	2003
1.4	77000	37730	39270	2004
1.4	77100	37800	39300	2005
1.4	78400	38500	39900	2006

. 2006

:-

(3)



( 3 )

( 2006-1994 )

: 4.4

( 1200 )

( 1600)

300

50

(4)

) 950

-(2002

. 1641

: 1

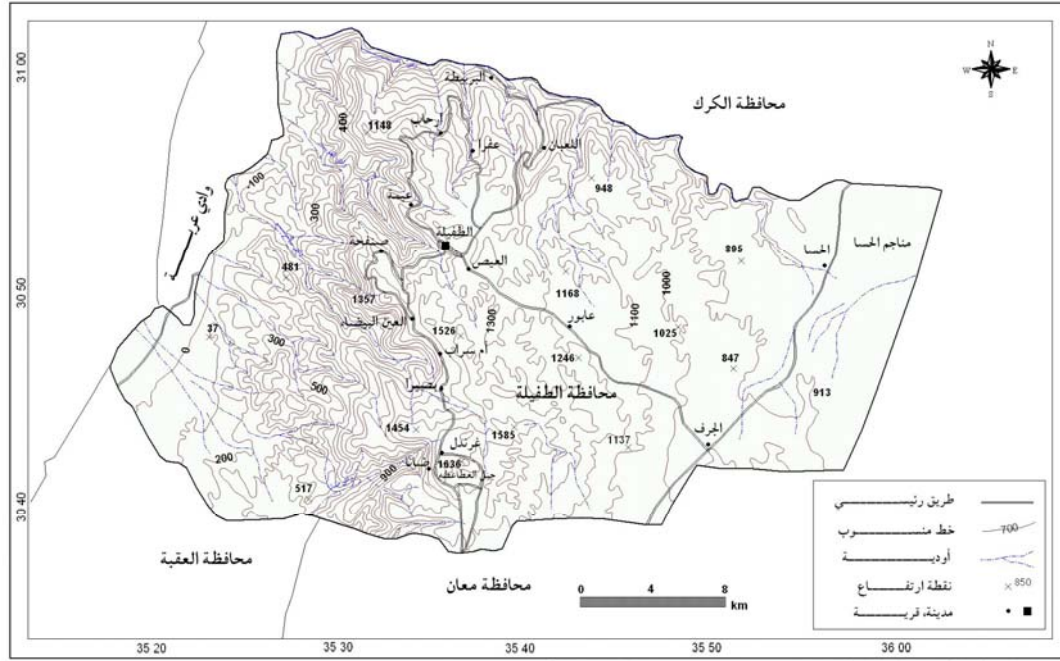
. 1600 : 2

. 1536 : 3

1000 : 4

. 1400 : 5

.(1985 ) .



المصدر: الخارطة الطبوغرافية لمحافظة الطفيلة، مقياس رسم ١:١٠٠٠٠٠، المركز الجغرافي الملكي الاردني، ٢٠٠٢.

شكل ( )  
الخارطة الطبوغرافية لمحافظة الطفيلة.

.  
 :  
 :( ) -1  
 .  
 :( ) -2  
 .  
 :( ) -3  
 .  
 -4  
 :  
 - .  
 .  
 .  
 .  
 .  
 .  
 -5



.(2007 ) - 20  
: 5.4

.(1985 )  
:

(10)

222 2223 (2007-2006 | 1998-1997 )  
312 2007-2006  
(2007 ). 300

( 10 )

(2007-2006 | 1998-1997 )

كمية الأمطار - ملم	العام	كمية الأمطار - ملم	العام
195	2003 -2002	256	1998-1997
266	2004 – 2003	141	1999 – 1998
288	2005- 2004	102	2000 – 1999
182	2006 -2005	207	2001 – 2000
312	2007-2006	274	2002 – 2001

(2007 )

:

3 – 1150  
12-10  
(11) . 23.6  
( 11 )  
( )

21.7	18.9	14.8	10	7.4	6.5
8.6	12.9	18.4	22	23.6	23.6

( .2007 )

:

.% 70

%30

:

) "

" -:

(21

1953

-3-1

.

1953

1969

1979

( )

.

:

(132 )

(360)

3 (8)

.(2005 ) . 3 (14)

2003

.2 2520

3 16.8

% 99.5

% 99

%25

2006

288

(12) / 118

(12)

(<sup>3</sup>)

3637583

116739

. 2006

-:

:

100

44

47 - 46

.  
(2006 )

:

**6.4**

1500

.(1993 ).

2209.080

93214

100825

(13) ,2 30000  
. (2007 ) .

16

.

. (2007 )

(13)

( )

---

38230

0

26263

14972

0

5445

---

. 2006

-:

(14)

(14)

---

---

33100	ماعز
78176	
120	
314	الإبل
29	
3	
600	
3	

---

. 2006      -:

.(15)

(15)

---

---

4
0
2
3
4
1
3
2
2

---

. 2006      -:

.

:

45000

80000

(2006

).

.(2007

).

:

**7.4**

1954

36

1957

1958

200

.(1993

)



(100) 2006

(16)

%73

(16)

---

75167	14	29	0	4
18496	5	7	0	16
22505	11	17	0	6
0	8	118	0	14
0	0	34	9	13
31230	13	25	1	12
65504	3	13	0	4
2548	0	8	7	13

---

. 2006

-:

:

**8.4**

1921

1918  
1922  
1923  
1940

1970

2003-1999

(17)

(17)

---

635	83	57	57	884	333	328	297
537	30	41	41	133	0	68	58
55	8	4	4	25	0	11	17
54	4	4	4	29	29	0	0

. 2006

:-

116

2006

(18)

. 2006

(18)

---

عدد المدارس

---

-	-	-	-	1	1	59	3	20	7	7	14
4	0	0	0	0	0	0	0	0	0	0	0

---

. 2006 -:

24011

13

579

2352

41

74

(19)

35

(19)

---

				%	%
6982	7392	986	563	0.08	52
3097	3240	319	195	0.03	23
1608	1692	187	102	0.02	12
11687	12324	1492	860		

---

. 2006 -:

32

2007/2006

6

2004

(20)

(20)

---

---

1006	1102	10	119
152	123		

---

. 2006

:

**9.4**

1999

	550	585	1135
95		210	
.(1999	)	550	

.(2007 ) .  
(21)

(21)

---

( )	( )
7	7
11	27
6	26
36	16
33	32
23	23
34	55
34	36
17	11
29	30

---

.(2002 )

2005 7601

379

.(2005

) .

% 5.2

(22)

(22)

2005

---

185

42

---

. 2006

-:

24

117

72

2006

22

( 23)

(23 )

2005

---

163

22

24

117

72

9

26

37

1

1

0

0

---

. 2006

-:

: 10.4

"

"

" "

"

"

.(2005 )

:

1

2

35

36

150		200	600
.(2003	) .		- 3
	)		
.(	)		4
		(	
.		(24)	
		(5)	
	(24)		

---



---

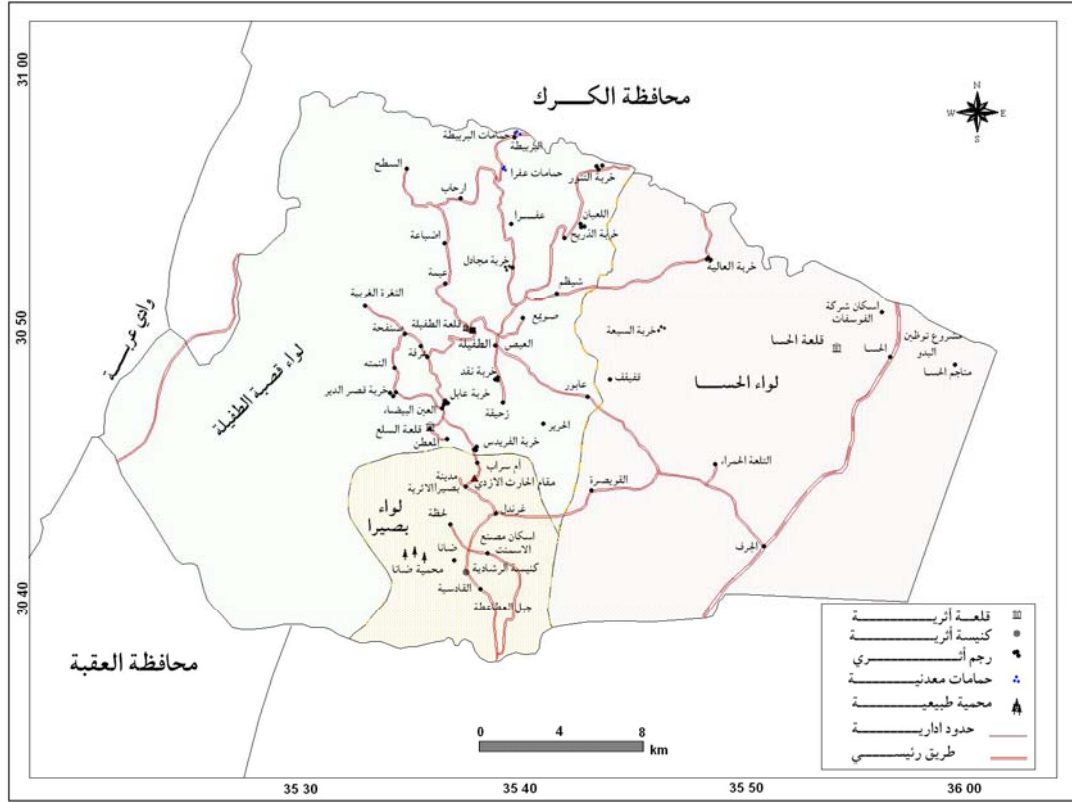
-

---

. 2006

-:





المصدر: الخارطة الطبوغرافية، السياحية لمحافظة الطفيلة مقياس رسم ١: ٢٥٠٠٠٠، المركز الجغرافي الملكي الاردني.

شكل ( )  
المواقع الاثرية في محافظة الطفيلة.

( . 1100)

-:

1

2

3

4

5

(2007 ).

2005

: 11.4

[ 35 37 45 - 35 35 50 ]

[ 30 48 02 -50 30 38 ]

(2005-1953 )

8.75

2.2

3.5

(6)

2

(7)

(25)

1961

14155

.2006-1955

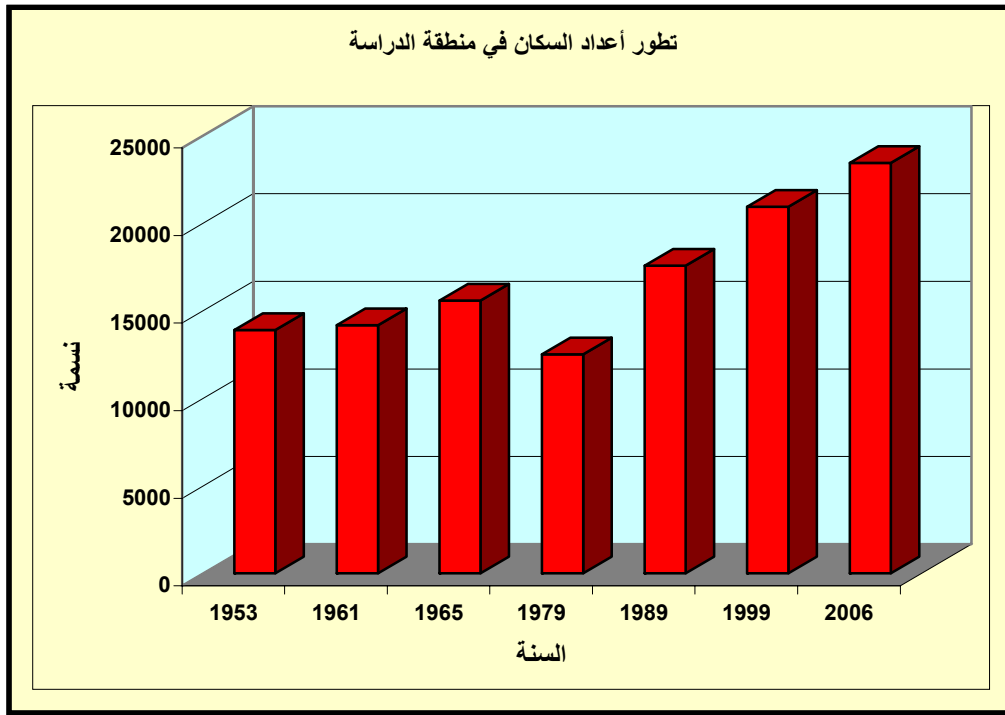
( 25 )

---

13895	1955
14155	1961
15576	1965
12493	1979
14917	1985
17293	1990
20925	1999
23420	2006

---

(6)



(7)

.(2005 ) .

:

( )

(8)

( 26 )

( 26 )

---

/

---

250.000 – 100.000 ( )

100.000 – 80.000

30.000 – 20.000

30.000 – 15.000

20.000 – 10.000

15.000 – 10.000

25.000 – 15.000

30.000 – 20.000

20.000 – 15.000

20.000 – 15.000

25.000 – 15.000

---

.2007 :

**(8)**

:

12.4

-1

"Central Business District"

( 27 ) .(2007 ) .



(27 )

---

---

5	99
4	6
7	15
8	30
5	3
6	11
5	7
2	4
2	1

---

(2007) :

-2

" "

(1995 ).

%18

-3

(5)

.

-4

% 5.1

(28)

.

-5

.

( 28 )

---

---

-				1
	-			2
		-		3
(			)	4
		-		5
		-		6
		-		7
		-		8
		-		9
	-			10
		-		11
		-		12
		-		13
	-			14
		-		15
		-		16
		-		17
-(			)	18
	-	-		19
	-			20

---

:

:

13.4

(7) (6)



(6)



(7)

1

- )

(

2

3

4

5

6

7

(10) (9) (8)

(2007

)



(8)



(9)



(10)

1.5

1953

-1

:

(9)

- .

104.6

- .

954.4

8.95

1976

-2

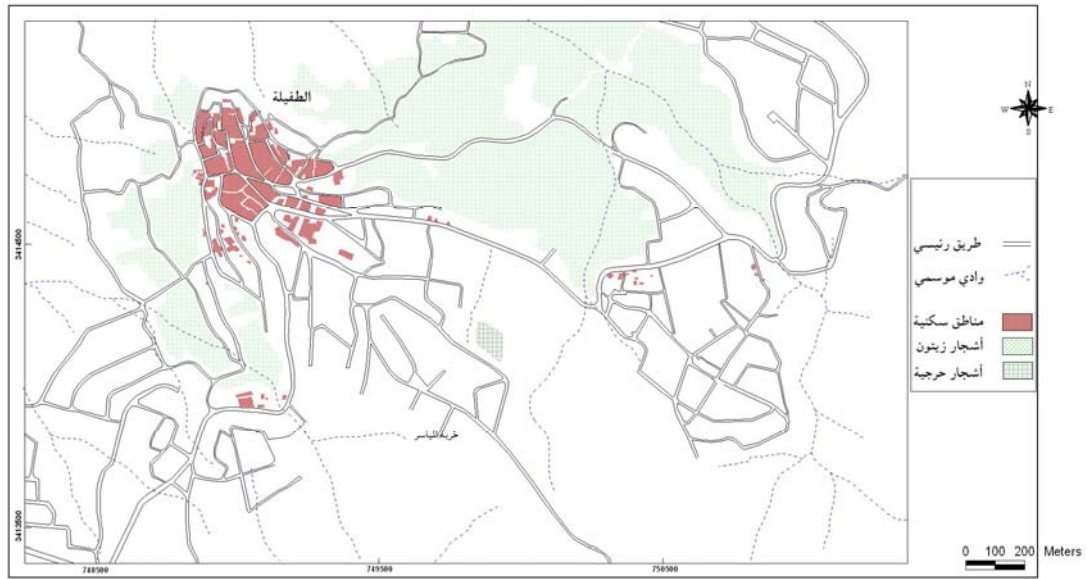
:

(10)

.

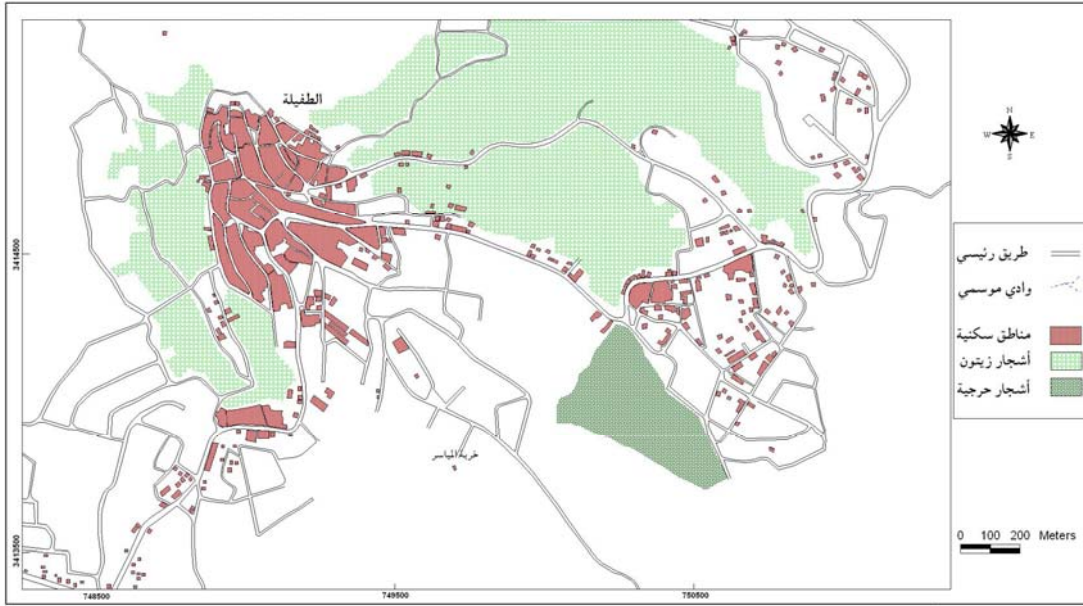
.

288.04



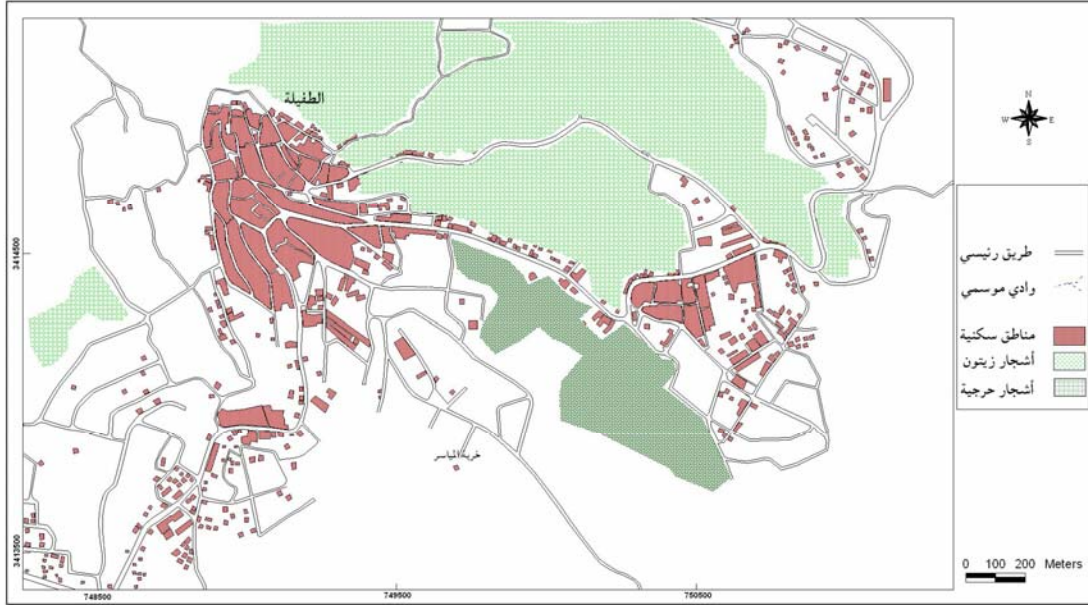
شكل ( ) المناطق المأهولة في منطقة الدراسة من الصور الجوية عام ١٩٥٣



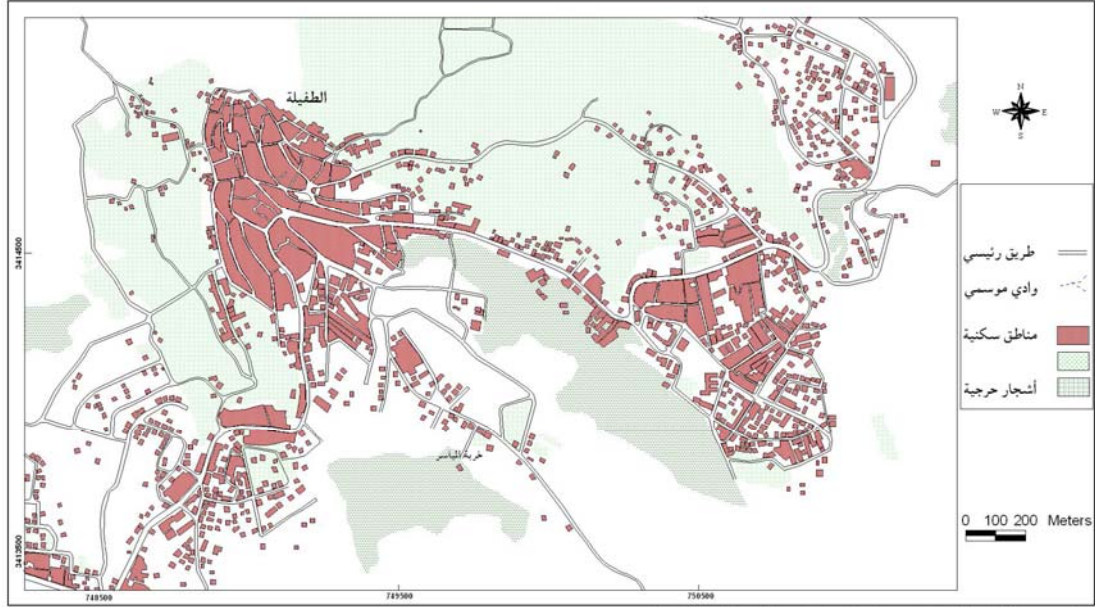


شكل ( ) المناطق المأهولة في منطقة الدراسة من الصور الجوية عام ١٩٧٦.

					-
			. 1054.5		
141.6					-
1953					-
			. 183.5	1976	
(11)	1992				-3
			:		
					.
					.
389.9_					.
					.
					-
			. 1090.9		.
241.7					.
					.
	1992	1953			.
					.
				. 285.3	
2005					-4
			:	(12)	
					-



شكل ( ) المناطق المأهولة في منطقة الدراسة من الصور الجوية عام ١٩٩٢.



شكل ( ) المناطق المأهولة في منطقة الدراسة من المرئية الفضائية لعام ٢٠٠٥.

671.3

. 462.5

2005 1953

. 1554.6

. 566.7

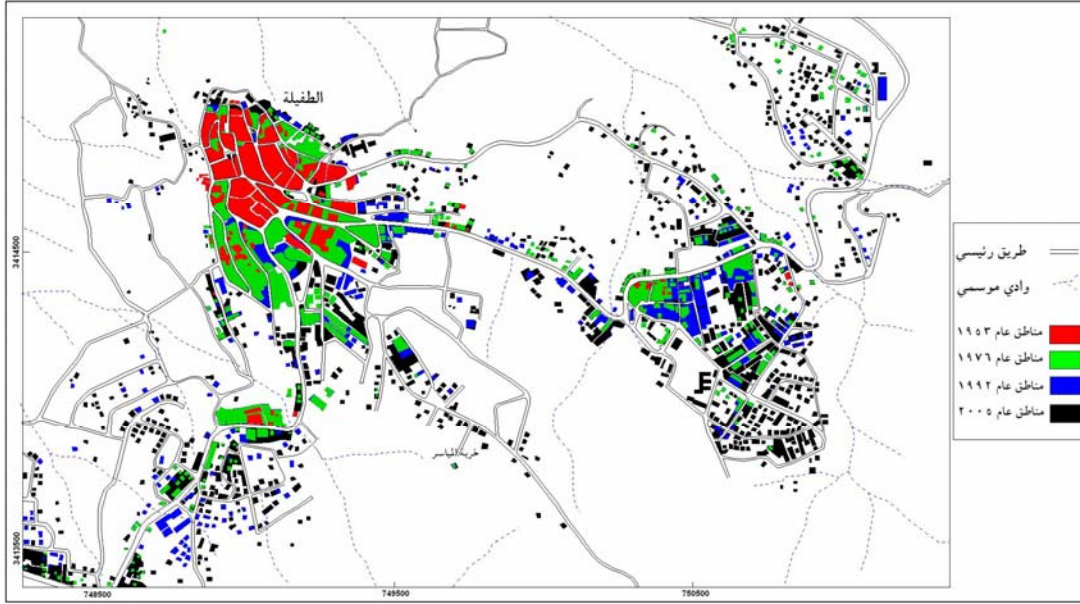
( ) -5

.( 13 ) .2005

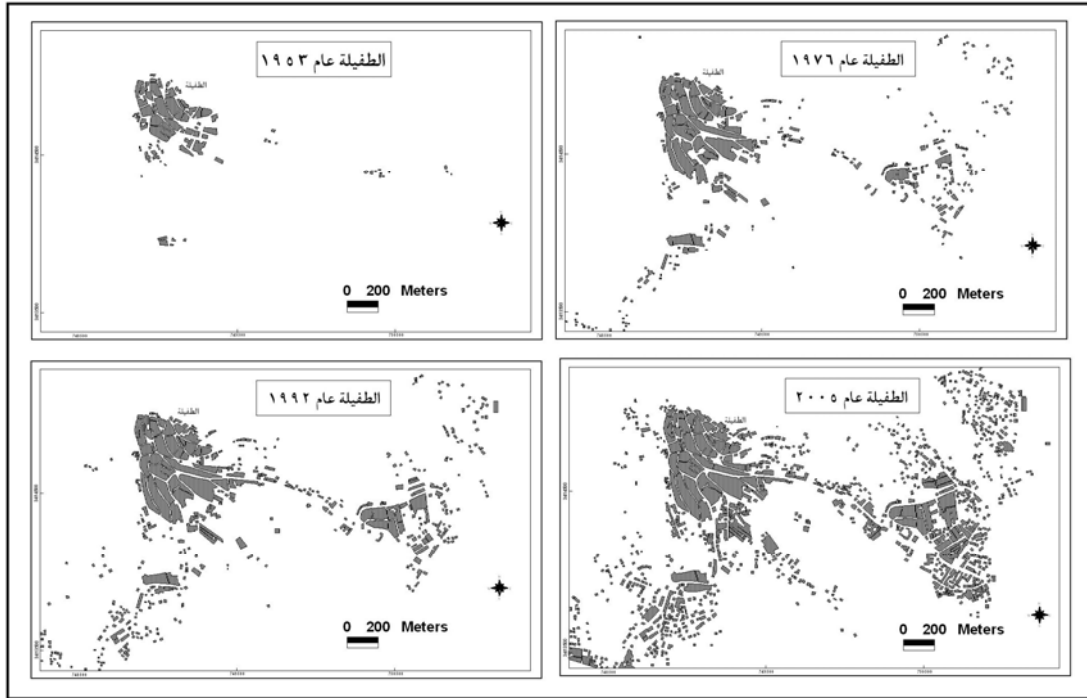
1992 1978 1953

-6

.(14)



شكل ( ) التطور العمراني التراكمي لمنطقة الدراسة خلال الفترة (١٩٥٣-٢٠٠٥).



شكل ( ) التطور العمراني لمدينة الطفيلة خلال الفترة (١٩٥٣-٢٠٠٥).

:

2.5

2005

1953, 1976, 1992

Buffer Zone

:

(15)

3

-1

100

Buffer Zone

.

1953

-2

.14

4.305

200

Buffer Zone

-3

49.4

1976

.78

45

300

Buffer Zone

-4

104.3

1992

.145

55

400

Buffer Zone

-5

311.7

2005

.567

207.3





100                      Buffer Zone                      24.4  
 400      300      200                      Buffer Zone  
 .(29)

( 29 )

---



---

-	24.4	100
110.8	135.2	200
166.4	190.8	300
198.5	223.0	400

---

(16)

52

(30)

(30)

2004

---

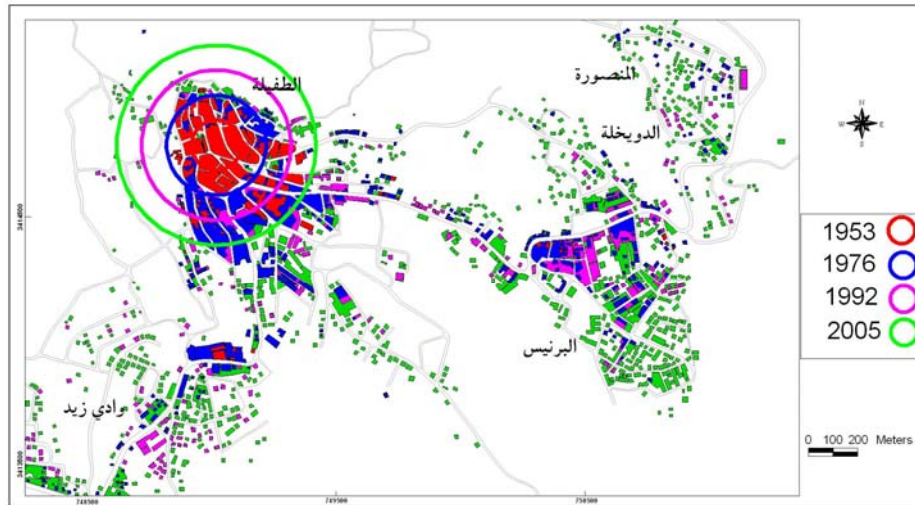
---

31208	235224	102008	133216
-4439	71859	38149	33710
-622	180206	90414	89792
-1268	23432	12350	11082
-17380	83282	50331	32951
7201	37813	15306	22507
-4316	19930	12123	7807
-6802	17990	12396	5594
-8157	30519	19338	11181
-2753	17177	9965	7212
-3675	17863	10769	7094
11003	32925	10961	21964

---

.2004

:



شكل ( )  
 القطاعات المساحية الدائرية المثلثة للتطور المساحي في مدينة الطفيلة.

: 3.5

[2005-1953]

:

104.6 (Built up Area) -1

1953

288.0 (Built up Area) -2

183.4 1976

[1976-1953]

389.9 (Built up Area) -3

101.8 1992

671.3 (Built up Area) -4

( 31) 281.4 2005

. [2005-1953]

(31)

[2005-1953]

	( 2 )	( 2 )	
0	0	104591	1953
% 32	183445	288036	1976
% 19	101816	389852	1992
% 49	281437	671289	2005



.

.

.

: **4.5**

-:

1

2

3

4

5

6

7

8

9

10

11



: -

.(1986)

.( 2005)

3 21

(2003 )

.(2002)

.(2000)

1995

2004

.(1994)

( ) -

(2003)

(2004)

(2005)

-

.( 1998)

(1985)

2003

(1993)

.(1996 )

(2004)

(1995)

.(2004)

1

.(1985)

2

.(1986)

—

.(2002)

.(1977)

"

"

.(2003)

.(1995)

(2006)

.(1995 )

(1997)

.(2001)

-(1998)

.(1993)

**(1946-1892)**

(2005)

.(2002)

-

(2006)

(1990 )

-

.(1999)

(1995 )

- :
- 
- Aspinal, Miller and Brinie, (1993), Geographical Information System for rural land use planning, **Applied Geography**. Vol.13, No.1, p 55.
- Bender, F. (1974), **Geology of Jordan** , Gebruder Borntrager, Berlin, p196.
- Bruce, (1996), **GIS a Visual approach**, On word press, Santa Fe, USA.
- Campbell,(1996) **Introduction to remote Sensing**, 2ed edition, Davis. Environmental Systems Research Institute. 1990. **Understanding GIS: The ARC/INFO method**. Redlands, CA: ESRI, 1 v.
- Environmental Systems Research Institute. 1999. GIS for Everyone. Redlands, CA: ESRI** Available on: (<http://www.ncsu.edu/midlink/gis/>)
- Fischer, M. M., Scholten, H. J., & Unwin, D. J. 1996. **Geographic information systems, spatial data analysis and spatial modeling: an introduction**. In M. M. Fischer, H. J. Scholten, & D. J. Unwin (editors), **Spatial Analytical Perspectives on GIS—GIS DATA Series IV**. London: Taylor & Francis. Available on: (<http://www.ncsu.edu/midlink/gis/>)
- Kent, Jones and Weare (1993), Geographical information system and remote Sensing in land use planning: an introduction , **applied geography**. Vol.13, No.1,p.58.
- Oroud, Ibrahim, and Alrousan, (2004), Urban Encroachment on Rain-Fed Agricultural Lands in Jordan, **The Arab World Geographer**, Vol. 7, No. 3. p 165-180.
- Onsrud, H. J., and David W. Cook, Editors. 1990. **Geographic and Land Information Systems for Practicing Surveyors**. Harlan J. Onsrud and David W. Cook, Editors. American Congress on Surveying and Mapping.
- People , M. ( 1997) , Decentralized Development Planning in Spring Indonesia : Linking Organizational Structure and Planning Strategy , **Research Series** , No 15, University of Dortmund, Germany.
- Saunders, J. (1992) **Land use in Barbados and Sudan using Remote**. Available on: [www.remotesensing/application](http://www.remotesensing/application).